

# Totally Renewable Phillip Island 2021 Annual Report



# Abbreviations



<b>BCSC</b>	Bass Coast Shire Council
<b>BCCAN</b>	Bass Coast Climate Action Network
<b>BCLN</b>	Bass Coast Landcare Network
<b>BF</b>	Bimbadeen Farm
<b>BB</b>	Boomerang Bags
<b>BZE</b>	Beyond Zero Emissions
<b>COVID-19</b>	Corona Virus pandemic
<b>CRG</b>	Climate reference Group
<b>DPI</b>	Destination Phillip Island
<b>EICo-op</b>	Energy Innovation Co-operative
<b>JJD</b>	Jeni Jobe Design
<b>NPS</b>	Newhaven Primary School
<b>PICAL</b>	Phillip Island Community and Learning Centre
<b>PICS</b>	Phillip Island Conservation Society
<b>PILG</b>	Phillip Island Landcare Group
<b>PINP</b>	Phillip Island Nature Parks, including the Barb Martin Bush Bank
<b>PFPISR</b>	Plastic-Free Phillip Island and San Remo
<b>TRPI</b>	Totally Renewable Phillip Island
<b>SBA</b>	Smith's Beachcomber Association
<b>VVM</b>	Vietnam Veterans Museum
<b>WPW</b>	Westernport Water

# Totally Renewable Phillip Island 2021 Annual Report

## Executive Summary

A Community Energy public forum was held in June 2018 by the Energy Innovation Co-operative in partnership with Phillip Island groups who later became members. The public forum unanimously agreed to form Totally Renewable Phillip Island with a vision of zero emissions by 2030.

The momentum and enthusiasm from the public meeting were capitalised on with three subsequent workshops to plan strategies to progress Totally Renewable Phillip Island. The workshop series was well attended and received overwhelmingly positive feedback.

The workshops created a framework that identified six focus areas and a core coordinating group representing each of the focus areas:

- ▶ Carbon accounting
- ▶ Carbon farming
- ▶ Clean energy
- ▶ Education and communication
- ▶ Food and waste
- ▶ Toward zero emissions transport

### Move to today in 2021

Totally Renewable Phillip Island (TRPI) is a movement or a collective of 13 Phillip Island community groups that share the TRPI vision to build a sustainable environment. Each member organisation retains its independent identity and governance structure, while working towards their own and the TRPI shared goals as part of their core business. The original core group and working groups are still in place and working hard to achieve the TRPI vision. Following is a summary of each group's activities.

### The Core Group

- ▶ Acts as a think tank and leads collaborative forward planning in all areas of the strategic plan
- ▶ Supports the working groups and their projects
- ▶ Reports back to funding bodies and the community on activities

### In 2020-21 the group achieved:

- ▶ Governance workshops in July led to starting to develop governance, policies and operational procedures to support future community owned and partnered projects
- ▶ Worked with Bass Coast Shire Council on energy efficiency and generating renewable energy in the Cowes Cultural centre design, Climate action plan and the land use Master Plan for their Gap Road property
- ▶ Farewell to Bhavani as Co-ordinator (staying on as head of the Carbon Farming WG) and welcome to Zoë Geyer our new Co-ordinator
- ▶ Made contact with Phillip Island Business Network to encourage Solar on Businesses
- ▶ Welcomed the Artist Society of Phillip Island and Newhaven College as new members
- ▶ Started regular contributions to the Phillip Island San Remo Advertiser Newspaper so the community is more aware of our work
- ▶ Strengthened our relationship with Bass Coast Climate Action Network and Just Transition South Gippsland – an emerging sustainability group in that shire.
- ▶ COVID has made community events impossible during this financial year but we have kept in contact with Waterline Communities through social media

### In 2021-22 the group plans to:

- ▶ When COVID safe, strengthen relationships with other communities in Bass Coast Shire and beyond to build sustainability networks for sharing resources and information
- ▶ Encourage new members to Totally Renewable Phillip Island e.g., strengthen relationships with businesses.

## Carbon Accounting

- ▶ Works to build an initial whole island total emissions profile to be able to monitor our progress towards our vision
- ▶ Encourages households and businesses to have emissions audits.

### In 2020-21 the group achieved:

- ▶ Engaged with Bass Coast Shire Council about the open-source accounting system/model they are using. Totally Renewable Phillip Island should use the same method as Council for consistency and cross referencing
- ▶ Worked with Newhaven College about a school-based Carbon Accounting project using the same system as Bass Coast Shire Council (needs to be star rating).

### In 2021-22 the group plans to:

- ▶ Increase community awareness of Phillip Island's Carbon Neutral status
- ▶ Enable community members to monitor real time energy use status via tracking App to inform energy use behaviours
- ▶ Seek funding for energy audits for 20 diverse households, 5 businesses
- ▶ Develop an online household energy audit tool.

## Carbon Farming Group

- ▶ Finds and implements ways to reduce carbon emissions in our community by growing vegetation to capture carbon from the atmosphere. This is good for the atmosphere and good for the soil by increasing productivity such as better crop yield, higher water retention and better soil health
- ▶ The Carbon Farming Working Group is backed by Phillip Island Landcare Group.

### In 2020-21 the group achieved:

- ▶ Changed the group name from Carbon Farming to Regenerative Carbon Farming to better reflect the need for regeneration work not just getting carbon in the ground
- ▶ Continued to monitor the original 5 farms in the soil carbon trial. Their soil will be retested in December 2021 there is any increase and decrease in carbon content
- ▶ Established and working with PILG to establish a voluntary offset program to plant trees
- ▶ Established and worked with Phillip Island Landcare Group to establish a voluntary offset program to plant trees and other re-vegetation projects
- ▶ A further five new farmers were recruited into Carbon Farming revegetation
- ▶ Finalist in Gippsland Agri-business awards.

### In 2021-22 the group plans to:

- ▶ Launch the voluntary offset program to plant trees together with Phillip Island Landcare Group at the 2021 Bass Coast sustainability festival
- ▶ Work with Council to use regenerative practises to restore the wetland on Gap Road
- ▶ Work more with Bass Coast Landcare Network to encourage farmer uptake of available education opportunities
- ▶ Work closely with Phillip Island Landcare Group & Bass Coast Shire Council to increase revegetation. Totally Renewable Phillip Island can help Phillip Island Landcare Group to reach more people to increase our effect on the environment. Engaged with Phillip Island Landcare Group about working together on revegetation projects. New project will be launched at the Sustainability Festival
- ▶ Education for small farm businesses to increase food production and supply for use in the local area
- ▶ Work towards achieving our target of 30% of Phillip Island returned to native vegetation (Bass Coast Shire Council's visitor economy strategy 2035).

## Clean Energy Group

- ▶ Work towards strategies to switch energy use on Phillip Island to a range of renewable generation methods
- ▶ Bringing together all partner organisations to work towards switching energy use on Phillip Island to a range of renewable generation methods.

### In 2020-21 the group achieved:

- ▶ 100% Renewable Phillip Island Feasibility study completed to map out the path to generate more renewable energy on the island
- ▶ Began implementing recommendations of the Pre-feasibility study to rollout renewable energy across the island
- ▶ Partnered with Mondo and the Energy Innovation Co-operative on the successful application for funding for two DELWP Neighbourhood Battery projects. One is a feasibility study for small neighbourhood batteries and the second one uses part of the Ausnet battery Neighbourhood Battery to store and trade locally generated renewable energy. Totally Renewable Phillip Island is responsible for the community engagement part of the project
- ▶ Referred the Smith's Beach Micro-grid proposal to Gippsland Community Power Hub for consideration for funding a feasibility study
- ▶ Collaborated with the National Vietnam Veterans Museum to analyse energy use and solar generation benefits over a five year period

### In 2021-22 the group plans to:

- ▶ Develop community wide strategies to reduce domestic and commercial energy usage and increase growth in the renewable energy generation capability on Phillip Island
- ▶ Support the 2 battery projects on Phillip Island including the tariff trial
- ▶ Work with Bass Coast Shire Council on plans for a solar farm on council property at Gap Road
- ▶ Continue to investigate alternate energy sources for Phillip Island including tidal generation and waste to energy
- ▶ In collaboration with the National Vietnam Veterans Museum investigate the feasibility of installing an appropriate on-site battery to enhance the total benefits to be gained in solar energy production, storage and use in a commercial environment
- ▶ In conjunction with the Smiths Beachcomber Association successfully advocated the inclusion of renewable energy use in Smiths Beach into the Bass Coast shire's Draft Smiths Beach Town Plan
- ▶ Develop an appropriate solar energy production, storage and use presentation to deliver at a Sustainability Event
- ▶ Analyse and document for public consumption, benefits to be gained in entering into Power Purchase Agreements

## Food & Waste Group

- ▶ Works towards avoiding and reducing the use of plastics
- ▶ Develops and implements strategies to reduce use and increase the reuse and recycling of a range of consumable items such as food, packaging and clothing.

### In 2020-21 the group achieved:

- ▶ Worked with the new Bass Coast Food Collective to increase the availability of locally produced food to be used on the island
- ▶ Supported Bass Coast Food Collective for the successful application for a Bass Coast Shire Council project grant to develop a Business Case for the collective. The project is auspiced by Bass Coast Landcare Network
- ▶ Kylie McMurray stepped down from Totally Renewable Phillip Island

### In 2021-22 the group plans to:

- ▶ Re invigorate the group and find a new leader
- ▶ Work with the Bass Coast Food Collective Steering Group to support the Business Case project and reflect this on the island
- ▶ Work with Westernport Water and Bass Coast Shire Council towards installing a commercial biodigester on the island for green and food waste to produce energy and agricultural fertiliser
- ▶ Advocate for community food initiatives, collaborate with and attract more producers, community groups and organisations to facilitate actions e.g. local produce distribution markets where producers can sell goods and connect with community
- ▶ Develop a local island food trail map.

## Communication & Education Group

- ▶ Builds community knowledge of sustainability practices
- ▶ Develops and delivers information at local events
- ▶ Maximises use of social media and internet platforms to find and distribute information

### In 2020-21 the group achieved:

- ▶ Worked with our member groups to develop targeted messaging
- ▶ Used digital and print messaging that highlights the benefit of decarbonising our homes, businesses and infrastructure to build community knowledge of sustainability practises that are available today
- ▶ Refined, built and trialled a school education program and competition to empower students and reach households as well as inspire students to study for the renewable industry jobs that will come
- ▶ Included renewable discussions at cultural and other local events
- ▶ Built on the successful work with Newhaven Primary School last year, to maintain messaging and keep students on target
- ▶ We had planned to attend the 2020 Bass Coast Landcare Network Sustainability Festival but it was cancelled. We are looking forward to the array of activities at this year's online Festival
- ▶ Shared frequent Facebook posts about the work of the member groups and give small to large ideas that people can do to move toward zero emissions
- ▶ Developed and maintained Totally Renewable Phillip Island web site and social media page to keep the community informed about Totally Renewable Phillip Island's work and attract new members

- ▶ Renewable energy trailer with Ian Southhall attended markets Churchill Island market
- ▶ Public appearance with Phillip Island Landcare Group's van at markets and other public events

### In 2021-22 the group plans to:

- ▶ Continue to develop and maintain website, social media page and printed information to keep the community informed about Totally Renewable Phillip Island's work and successes with energy sustainability
- ▶ Continue to source educational forums live or online for the community to attend working towards 2030 zero emissions
- ▶ Continue to attend community events (When COVID safe)
- ▶ Have the Totally Renewable Phillip Island's Student Wind Design competition finalised and put in place for 2022
- ▶ Work with Newhaven College to inspire students to a pathway into a renewable tech career
- ▶ Host a Sustainable Arts Show 2022, (this may be online due to COVID)
- ▶ Expand the education program to other schools on island and also toward Bass Valley Primary School to help propagate the renewable towns idea into the rest of Bass Coast Shire
- ▶ Residents' Power Challenge & Business Power Challenge to change power use behaviour to reduce power use
- ▶ Continue to source educational forums online or live for the community to attend working towards 2030 zero emissions.

## Clean Transport Group

- ▶ Supports increased opportunities for Active Transport on Phillip Island
- ▶ Share up to date information with the community on alternative forms of transport.

### In 2020-21 the group achieved:

- ▶ Attended 4 community events showcasing Electric Vehicles, both cars & Electric Motorbikes
- ▶ Participated in Infrastructure Victoria's Advisory Committee which addressed the question: 'What incentives does the Victorian Government need to put in place to increase the uptake of Electric Vehicles'? This was a series of directed learning & workshops over a 3 month period. It was informative and an opportunity to give feedback from a regional perspective
- ▶ Participated with 12 other community groups in the review of Speed Limits on Phillip Island, initiated by Cr Rooks and the Community Reference Group for Phillip Island Integrated Transport Strategy (Community Vision for Transport). Input supported the need for safe crossing points for cyclists, improved maintenance of existing on-road cycling lanes, reduced speed limit for a number of roads with high pedestrian and cycling use

- ▶ Supported Bass Coast Shire Council's progress on active transport policy and infrastructure for Electric Vehicle charging data across shire.
- ▶ Provided information to the public about EV Electric Vehicles at community events as possible. COVID restraints have prevented attendance at the Waterline communities
- ▶ Monitored the progress of the Cycling Strategy for Phillip Island currently being developed by Bass Coast Shire Council
- ▶ Facilitated a community member to present a proposal to Totally Renewable Phillip Island to hold an Electric Motorbike event on Phillip Island (when COVID safe). Totally Renewable Phillip Island strongly supported the proposal to showcase another clean transport option for commuter & recreational use

### In 2021-22 the group plans to:

- ▶ Explore a Community Bulk-Buy of second-hand Electric Vehicles imported from Japan for Bass Coast & South Gippsland Shires
- ▶ Conduct an Electric Vehicle activity at the Sustainability Festival
- ▶ Work with Bass Coast Shire Council to reduce transport related emissions by encouraging active transport for all abilities walking and cycle paths through community consultation

- ▶ Join the Community Reference group for Phillip Island Integrated Transport Strategy (Community Vision for Transport) to represent Totally Renewable Phillip Island's priorities for clean transport, including demand responsive small electric commuter vehicles, to provide Public Transport powered by renewable energy around the Island
- ▶ Work towards Safer cycling on Phillip Island and across Bass Coast Shire Council with a network of shared paths and on-road cycle lanes. This will facilitate new business opportunities for accommodation and support services for cyclists and walkers.
- ▶ Work with Bass Coast Shire Council to increase Electric Vehicle charging infrastructure across Bass Coast including Ultrafast charging at Cowes Transit Centre. Covered public carpark areas with solar panels/ batteries to provide renewable energy for all charging facilities
- ▶ Continue to support opportunities to showcase Electric Vehicles
- ▶ Investigate the possibility of an electric vehicle trial so ordinary people can try out electric vehicles.

# Contents

# Totally Renewable Phillip Island 2021 Annual Report

Prepared by  
Zoë Geyer  
Bhavani Rooks  
Jeni Jobe &  
Neroli Raf

Abbreviations.....	2	Section 2 Governance .....	10
2021 Annual Report Executive Summary.....	3	<b>Strategic Plan</b> .....	10
The Core Group.....	3	<b>Budget</b> .....	11
Carbon Accounting Group .....	4	Section 3 Working Groups.....	12
Carbon Farming Group .....	4	Core Coordinating Group.....	12
Clean Energy Group .....	5	Carbon Accounting Group .....	13
Food & Waste Group.....	5	Regenerative Carbon Farming Group .....	14
Communication & Education Group.....	6	Clean Energy Group .....	16
Clean Transport Group .....	7	Food & Waste Group.....	17
Section 1 Background.....	9	Communication & Education Group.....	18
TRPI Report Card .....	10	Clean Transport Group .....	21
TRPI Open Day 2019 Promotional campaign.....	10	Appendices referred to and separate from this document .....	22
		Appendix 1 Financial Report	



# Section 1

## Background

A Community Energy public forum was organised in June 2018 by the Energy Innovation Co-operative in partnership with the Phillip Island Community and Learning Centre, Phillip Island Landcare Group, Phillip Island Conservation Society, Boomerang Bags and Plastic-Free Phillip Island and San Remo.

Phillip Island already had high levels of activity around the environment and sustainability. Community enthusiasm was high after hearing from others leading their communities across Victoria such as Taryn Lane from Hepburn Shire Zero-Net Energy Towns and Matt Charles Jones from Totally Renewable Yackandandah.

The meeting passed a motion committing to a vision of Phillip Island become a carbon neutral community by 2030 through our collective efforts to use clean, efficient energy, reduce pollution and offset emissions zero emissions and powered by 100% renewables by 2030. Phillip Island became the first community in Bass Coast Shire to embrace the challenge of going 100% renewable.

In July 2018, a series of three workshops were held over two days built on the momentum and enthusiasm from the public meeting and to put place strategies in to progress Totally Renewable Phillip Island (TRPI). The workshop series was well attended and received overwhelmingly positive feedback, with many participants eager to progress to action. The workshops created a framework that identified six focus areas:

- ▶ Carbon accounting
- ▶ Carbon farming
- ▶ Clean energy
- ▶ Education and communication
- ▶ Food and waste
- ▶ Toward zero emissions transport

In addition, a core coordinating group was established with at least one member from each of the working groups.

Totally Renewable Phillip Island (TRPI) is a movement or a collective of many Phillip Island community groups that share the TRPI vision in relation to building a sustainable environment. Each member organisation retains its independent identity and governance structure, while working towards their own and the TRPI goals as part of their core business.



Totally Renewable Phillip Island members/partners include:

- \*Artists Society of Phillip Island
- Bass Coast Shire Council
- Bimbadeen Farm
- Boomerang Bags
- Energy Innovation Co-operative
- Jeni Jobe Design
- \*Newhaven College
- Phillip Island Landcare Group
- Phillip Island Nature Parks, inc.  
the Barb Martin Bush Bank
- Phillip Island Community & Learning
- Phillip Island Conservation Society
- Plastic Free Phillip Island
- Smiths Beachcomber Association
- Vietnam Veterans Museum
- Westernport Water

The information graphic shows our member groups with the Carbon Neutral focus for 2030. The working groups at the bottom of the graphic show the different approaches we are taking to realise the 2030 ambition.

\* Joined TRPI in 2021



# TRPI Report Card

Produced to promote TRPI handed out at community events and engagements

Despite the challenges of 2020 TRPI Core Group kept things rolling with the education pilot, investing in vital research and planning some great actions for 2021 - see highlights below, and details on our webpage [totallyrenewablephillipisland.weebly.com](http://totallyrenewablephillipisland.weebly.com)

## Achievements

### 2020

TRPI Education Program Pilot with Newhaven P.S. – see materials on the website's Education page

Five farms participating in Carbon Farming – details in Annual Report on the website's report page

TRPI Active Transport submission for a Cycle Safe Network to Bass Coast Shire – see submission on the website's Active Transport page

A Pre-Feasibility study on best actions to achieve a 100% Renewable Phillip Island by 2030 completed – full report on the website's report page

TRPI Annual Report – full document on the website's report page

### UPCOMING IN 2021

**TRPI Energy Challenge helping households reduce electricity use by 20%**

**TRPI Power making affordable renewable energy accessible for local businesses**

**Energy education trailer visits to local schools and community markets**

**Support for local schools to join Solar Schools and Wattwatchers curriculum-aligned lessons and learning experiences**

Follow our social media page for updates [facebook.com/totallyrenewablephillipisland](https://facebook.com/totallyrenewablephillipisland) [totallyrenewablephillipisland.weebly.com](http://totallyrenewablephillipisland.weebly.com)

For information on rebates for hot water system upgrades, solar energy subsidies and more energy saving advice go to... [www.victorianenergy-saver.vic.gov.au/](http://www.victorianenergy-saver.vic.gov.au/)



**TRPI is a movement of like minded individuals & groups**

committed to sharing strategies & working together, supporting & collaborating on joint areas to achieve what is needed

**- change**

**Feb 2021 Report Card**

# Section 2

Governance

Strategic Plan

Budget



Sample of a meme that gets posted to social media, designed to catch attention and direct the viewer to the TRPI web page, which further expands on current information

## Governance

During the 2020-21-year TRPI reviewed and strengthened its governance arrangements. A separate company social enterprise was explored to be able to own assets and attract investors in renewable energy projects on Phillip Island. The proposal included community benefit from the sale of renewable power from the company owned assets.

## Strategic Plan

A Strategic Plan (2019-23) was developed to clarify the tasks and time frame each Working Group will contribute on the path to achieving our vision. As the impact and duration of COVID-19 became clearer in April 2020, this strategic plan was reviewed and modified to maintain momentum and funding accountability by providing alternatives to face to face community meetings etc.

See Appendix 2. TRPI Strategic Plan page 25.

### Document the model to enable propagation in other communities

One of the intentions of the funding from BCSC to TRPI was to propagate the TRPI model to other communities in Bass Coast Shire, specifically in the Waterline Communities.

### Networking Groups

Bass Coast Climate Action Network

### Contact with other energy & sustainability groups

Through social media platforms, Face book provides an interface to comment on and share information.

### Subject Matter Expert Connections

Latrobe Valley Authority Innovation Groups networking – Community Energy and Microgrid Groups

## Seeding Projects

Seeding projects undertaken by TRPI during 2020-21 include:

Grant name	Project Description	Application Status
Gippsland Regional Climate Change Adaption Grant	Revegetation of eight farms	Unsuccessful
BCSC grant funding	Bass Coast Food collective seeding grant	Successful
	Accelerating Uptake of Climate Resilient Housing Design and Materials	
DELWP Neighbourhood Battery –	Pole Battery Feasibility Study	Successful
	Community Battery	Successful

## Budget

An annual budget was developed from the strategic plan to ensure that the Coordinator role and project activities would have the required funding throughout the year. This was reviewed due to activity changes resulting from COVID-19. See Appendix 3. TRPI Budget page 25.

# Section 3 Working Groups

Core Coordinating Group

Carbon Accounting Group

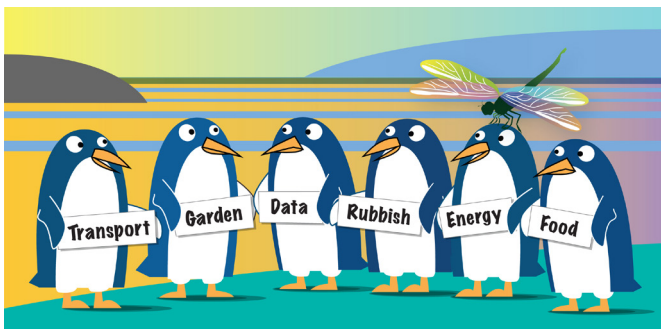
Regenerative Carbon Farming Group

Clean Energy Group

Food & Waste Group

Communication & Education Group

Clean Transport Group



Below are summaries of Reports from Working Group's. Full Reports are available in Appendix 5 Working Group Complete Reports (2020-21) p25.

## Core Coordinating Group

The purpose of the Core Working Group is to:

- Report back to funding bodies and the community on each of the working groups activities
- Leads collaborative forward planning for Totally Renewable Phillip Island

The Core Group acts as a think tank to create ideas for moving forward in all areas of the strategic plan. Members include a representative of each of the working groups and representatives of partner organisations. The monthly meetings also provide support for working groups that have a project running. For example, it took all Totally Renewable Phillip Island 's Core Group volunteers to make the Newhaven Primary School Project happen. From time to time we have visitors who are experts in the renewable field or are interested in learning more about Totally Renewable Phillip Island.

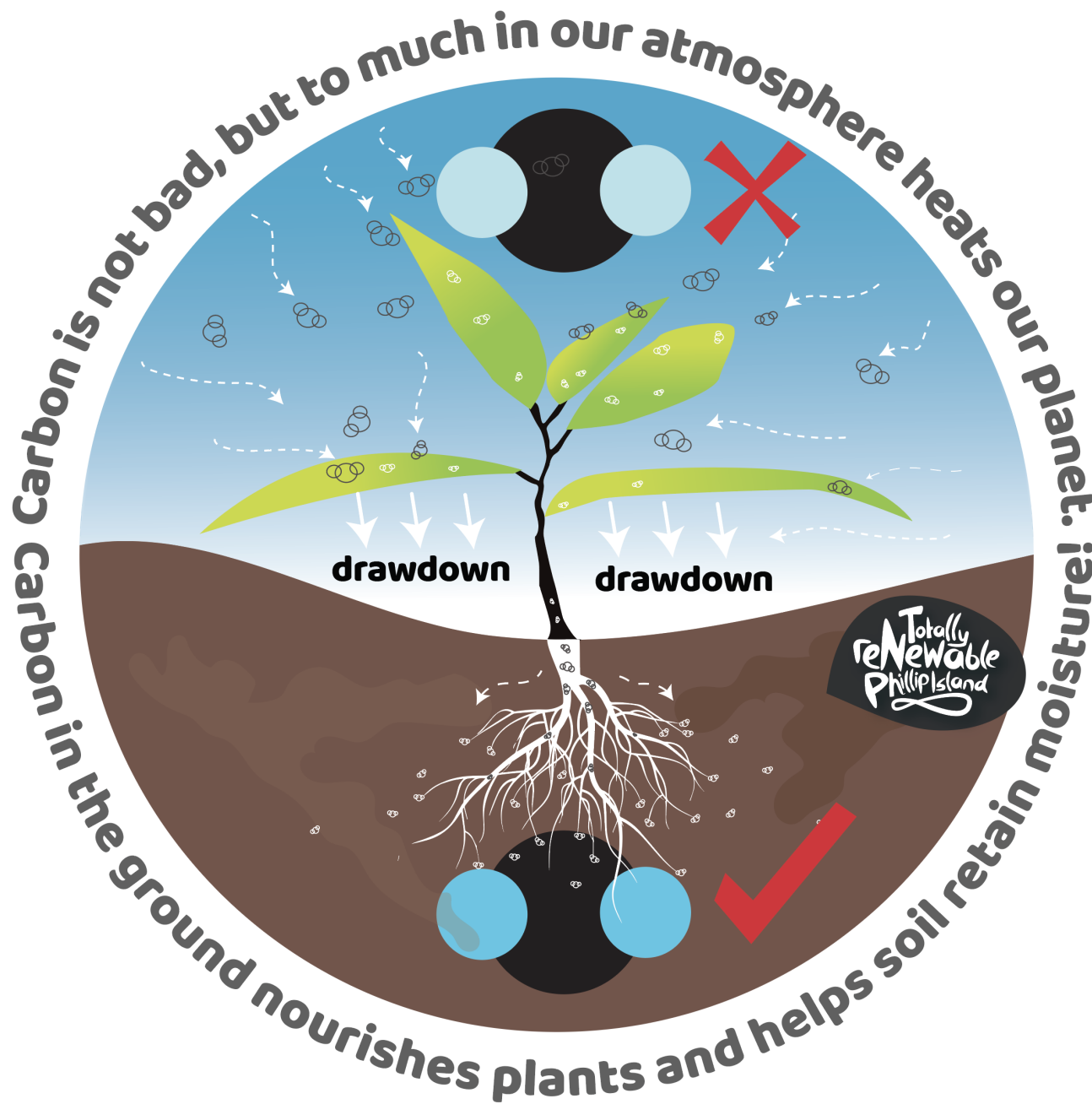
### Examples of 2020-21 actions:

- Governance workshops in July led to Totally Renewable Phillip Island starting to develop governance, policies and operational procedures to support future community owned and partnered projects
- Provided input to Council's Cowes Cultural centre design, including the need for energy efficiency and to generate renewable energy
- Provided input to Council's Master Plan for their Gap Road property land use

- Reviewed last year's budget (see Appendix 3)
- Reviewed Strategic Plan to be more COVID friendly
- Made contact with Phillip Island Business Network to encourage Solar on Businesses
- Farwell to Bhavani and welcome to Zoe our new Co-ordinator
- Welcomed the Artist Society of Phillip Island and Newhaven College as new members
- Started regular contributions to the Phillip Island San Remo Advertiser so the community is more aware of our work
- Strengthened our relationship with Bass Coast Climate Action Network
- Contributed to Bass Coast Shire Council's Climate action plan
- COVID has made community events impossible during this financial year but we have kept in contact with Waterline Communities??
- Documenting the Totally Renewable Phillip Island model has begun so more communities can learn from our experience
- Connected with Just Transition South Gippsland – an emerging sustainability group in that shire.

### Plans for the Future:

- When COVID safe, strengthen relationships with other communities in Bass Coast Shire and beyond to build sustainability networks for sharing resources and information
- Encourage new members to Totally Renewable Phillip Island e.g., strengthen relationships with businesses.



## Carbon Accounting Group

The purpose of the Carbon Accounting Working Group is to:

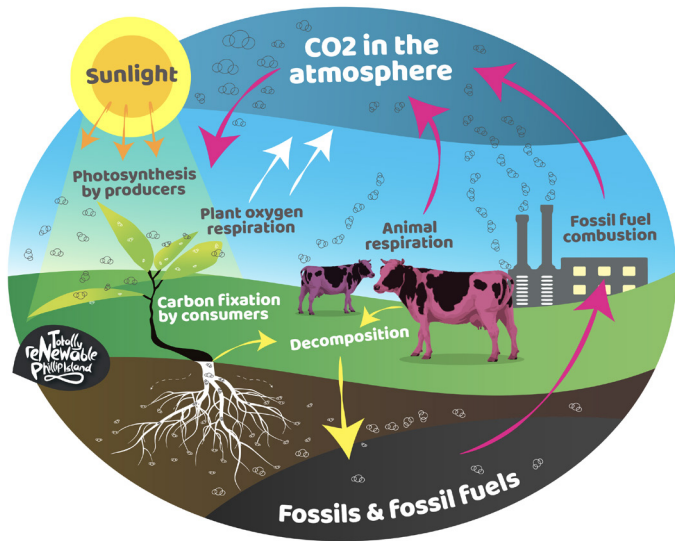
- ▶ Works to build an initial whole island total emissions profile to be able to monitor our progress towards our vision of Carbon Neutral by 2030
- ▶ Encourages households and businesses to have emissions audits.

Examples of 2020-21 actions:

- ▶ Engaged with Bass Coast Shire Council about the open source accounting system/model they are using. It will be maintained into the future & published to the council website. An advantage of using an Excel spreadsheet is that attributes can be changed to enable modelling different scenarios. Research sources are included. Znet has a blue print and Hepburn uses an open source template. Totally Renewable Phillip Island should use the same method as Council for consistency and cross referencing
- ▶ Worked with Newhaven College about a school based Carbon Accounting project using the same system as Bass Coast Shire Council (needs to be star rating).

Plans for the Future:

- ▶ All community members are aware of Carbon Neutral status available on Totally Renewable Phillip Island
- ▶ Vision for 2030: Community members able to monitor real time energy use status via tracking App that informs behaviours
- ▶ Seek funding for energy audits for 20 diverse households, 5 businesses
- ▶ Develop an online household energy audit tool.



## Regenerative Carbon Farming Group

### The purpose of the Carbon & Regenerative Farming Working Group is to:

- Find and implement ways to reduce carbon emissions in our community by growing vegetation to capture carbon from the atmosphere. This is good for the atmosphere and good for the soil by increasing productivity such as better crop yield, higher water retention and better soil health
- The Carbon Farming Working Group is backed by Phillip Island Landcare Group.

### Examples of 2020-21 actions:

- Changed the group name from Carbon Farming to Regenerative Carbon Farming to better reflect the need for regeneration work not just getting carbon in the ground
- Continued monitoring first 5 farmers started in the carbon farming trial in 2019. They will be retested in December 2021 after 2 years of changed farming practises to see there is any increase and decrease in carbon content

- A further five new farmers were recruited in into Carbon Farming revegetation
- Established and working with Phillip Island Landcare Group to establish a voluntary offset program to plant trees. Engaged with a wide group of land holders to look at revegetation and removal of cypress in favour of native plantations with a view for grants into the future. There will be core activities that each farm will use and also individual add-ons: Volunteer work for tree planting, diverse pasture seeding, wildlife shelter belts, fencing, removal introduced plant species, dam restorations. Potentially looking at extension of irrigation, biochar, microbes & dung beetles to value add. Bushbank, Landcare, nature parks will give in-kind contributions through providing plants, wildlife impact research
- Gippsland Climate Adaptation Funding: Farming practice adaptation & resilience (Phillip Island Landcare Group and Totally Renewable Phillip Island) submitted through Phillip Island Landcare Group - unsuccessful
- Entered excellence in agri-business awards – was a finalist
- Vietnam Veterans have had their initial carbon soil test and are looking toward revegetating the area
- Engaged with Phillip Island Landcare Group about working together on revegetation projects
- Encourage farmers to use the resources that Bass Coast Landcare Network have on regenerative farming and to adopt these practices.
- Work more with Bass Coast Landcare Network to encourage farmer uptake of available education opportunities
- Get to know more of the smaller land holders that may not farm but have land available for revegetation. Educate them about the potential of their land for helping climate resilience including bio-links, vegetation corridors and shelter belts
- Build a list of land holders and farmers on Phillip Island to enable broader communication of regenerative practises
- Work closely with Phillip Island Landcare Group & Bass Coast Shire Council to increase revegetation. Totally Renewable Phillip Island can help Phillip Island Landcare Group to reach more people to increase our effect on the environment. Engaged with Phillip Island Landcare Group about working together on revegetation projects. New project will be launched at the Sustainability Festival
- Launch, together with Phillip Island Landcare Group, the voluntary offset program to plant trees on Phillip Island at the 2021 Bass Coast Sustainability Festival
- Work closely with Bass Coast Shire Council to implement their Bio-links plan for the island's future
- Education for small farm businesses to increase food production and supply for use in the local area
- Achieve target of 30% of island returned to native vegetation (Bass Coast Shire Council's visitor economy strategy 2035)
- Promote and market an online carbon trading platform in conjunction with Bass Coast Landcare Network to enable farmers to directly trade the stored soil carbon on their farms with local individuals and businesses.

### Plans for the Future:

- Work with Council to use regenerative practises to restore the wetland on Gap Road
- Teach and encourage the 5 principals of regenerative agriculture: Minimising soil disturbance, Minimising the use of chemical inputs, Maximising biodiversity both animals and plants, Keeping the soil covered with grasses or crops as long as possible, Adapting to the local environment

## Clean Energy Group

The purpose of the Clean Energy Working Group is to:

- ▶ Work towards strategies to switch energy use on Phillip Island to a range of renewable generation methods
- ▶ Bringing together all partner organisations to work towards switching energy use on Phillip Island to a range of renewable generation methods.

## Examples of 2020-21 actions:

- ▶ 100% Renewable Phillip Island Feasibility study completed to map out the path to generate more renewable energy on the island
- ▶ Began implementing recommendations of the Pre-feasibility study to rollout renewable energy across the island by supporting the AusNet Mondo battery project
- ▶ Developed a database of power retailers that support renewable energy generators and customers to trade renewable energy
- ▶ Developed a database of industrial/commercial rooves across the island that could host renewable energy generation
- ▶ Partnered with Mondo and the Energy Innovation Co-operative on the successful application for funding for two DELWP Neighbourhood Battery projects. One is a feasibility study for small neighbourhood batteries and the second one uses part of the Ausnet battery Neighbourhood Battery to store and trade locally generated renewable energy. Totally Renewable Phillip Island is responsible for the community engagement part of the project.
- ▶ Referred the Smith's Beach Microgrid proposal to Gippsland Community Power Hub for consideration for funding a feasibility study.

## Plans for the Future:

- ▶ Develop community wide strategies to reduce domestic and commercial energy usage and increase growth in the renewable energy generation capability on Phillip Island including residents and businesses
- ▶ Support the 2 battery projects on Phillip Island including the tariff trial
- ▶ Work with Bass Coast Shire Council on plans for a solar farm on council property at Gap Road
- ▶ Continue to investigate alternate energy sources for Phillip Island including tidal generation and waste to energy.

**Community POP UP**

**At Wimbledon Heights**  
**Sunday the 24th Oct 1:00-3:30pm**  
 Information event on the Phillip Island Community Energy Storage System (PICSS)

Get info on the **Big Battery** planned for Phillip Island at the Gap Rd site. Pop up event is this Sunday at Wimbledon Heights Reserve at 1pm to 3.30pm.

Links to more info at [totallyrenewablephillipisland.weebly.com](http://totallyrenewablephillipisland.weebly.com)

mondo energy innovation CO-OPERATIVE Totally Renewable Phillip Island





Two students from Newhaven P.S. putting together a worm farm donated by Bunnings at the request of Peter Wontfor during the Education Pilot.

## Food & Waste Group

### The purpose of the Food & Waste Working Group is to:

- ▶ Work towards avoiding and reducing use of plastics
- ▶ Develop and implement strategies to reduce use and increase the reuse and recycling of a range of consumable items such as food, packaging, clothing.

### Examples of 2020-21 actions:

- ▶ Worked with the new Bass Coast Food Collective since August to increase the availability of locally produced food to be used on the island
- ▶ Totally Renewable Phillip Island and Bass Coast Climate Action Network met online in September 2020 to discuss the 3rd episode of Fight for Planet A, which focused on food. Over 50 people attended, confirming greater connection is needed between growers & consumers
- ▶ Supported Bass Coast Food Collective for the successful application for a Bass Coast Shire Council project grant to develop a Business Case for the collective. The project is auspiced by Bass Coast Landcare Network
- ▶ Visiting guest Elizabeth Collins (Yanakie) Project green plot
- ▶ Kylie McMurray stepped down from TRPI
- ▶ Group needs to be reactivated

### Plans for the Future:

- ▶ Re invigorate the group and find a new leader
- ▶ Work with the Bass Coast Food Collective Steering Group to support the Business Case project and reflect this on the island
- ▶ Work with Westernport Water and Bass Coast Shire Council towards installing a commercial biodigester on the island for green and food waste to produce energy and agricultural fertiliser
- ▶ Weekly local produce distribution market at Phillip Island Winery. Local Farmers markets in key locations across Bass Coast Shire, e.g. Wonthaggi, Inverloch, Bass, where producers sell goods and connect with community
- ▶ Work with Bass Coast Shire Council to include the Bass Coast Food Collective's various food production activities at the Gap Road site
- ▶ Work with Bass Coast Landcare Network to use the River Garden at Bass to also support activities
- ▶ Develop a local island food trail map
- ▶ Investigate a local food brand, underpinned by Sustainable land management principles, that Bass Coast producers can use to market their products and connect to community
- ▶ Bass Coast Food Collective has built a database of local producers and food interests, enabling them to address gaps in local food systems through a variety of strategic approaches. This has creatively enabled local people to connect to local producers and know that they are part of a story of production, distribution and consumption that supports increased sustainability of our land
- ▶ Advocate for community food initiatives, collaborate with and attract more producers, and like community groups and organisations to facilitate actions.



## Communication & Education Group

The purpose of the Communication & Education Working Group is to:

- ▶ Use messaging that highlights the benefit of decarbonising our homes, businesses and infrastructure over digital and print platforms
- ▶ Develop content for web page and online platforms that build community knowledge of sustainability practises that are available today
- ▶ Work with our member groups to develop targeted messaging
- ▶ Monitor social media uptake and internet platforms to strategise educational opportunities
- ▶ Refine, build and trial a school education programs and competitions to empower students and reach households as well as inspire students to study for the renewable industry jobs that will come
- ▶ Build community knowledge of sustainability
- ▶ Include the renewable discussions at cultural events
- ▶ Develop and deliver information at local events
- ▶ Maximise use of social media and internet platforms to find and distribute information.

## Examples of 2020-21 actions:

- ▶ Totally Renewable Phillip Island web site and social media page have been developed and maintained to keep the community informed about Totally Renewable Phillip Island's work and successes with energy sustainability
- ▶ Frequent Facebook posts share the work of the member groups and give small to large ideas that people can do to move toward zero emissions
- ▶ Building on the successful work with Newhaven Primary School last year, to maintain messaging and keep students on target
- ▶ Artist Society of Phillip Island has agreed to join TRPI, using their collective reach to share sustainable messaging
- ▶ We had planned to attend the 2020 Bass Coast Landcare Network Sustainability Festival but it was cancelled. We are looking forward to the array of activities at this year's online Festival
- ▶ Newhaven College has agreed to join Totally Renewable Phillip Island, with the focus of education and readying students for work in a climate prepared future
- ▶ Kids Catalyst program - Jenny going to school to discuss inclusion of native animals
- ▶ Renewable energy trailer with Ian Southhall attended markets Churchill Island market
- ▶ Public appearance with Phillip Island Landcare Group's van at markets and other public events.

What if EV Fast Charger stations also promoted BASS COAST Festivals and Local Businesses?

**BASS COAST DESTINATION SITES**

**LOCAL Events**  
 21 Oct - festival  
 8 Nov - Food & Bev  
 15 Nov - Parade  
 5 Dec - Opening  
 8 Dec - School Fete  
 12 Dec - Cowes Beach Party Hoopaloosa

# What if?

**Will an EV be your next car?**  
 Consider this: the Good Car Company (part of Energy Lab, Australia's largest clean tech start up - dedicated to the clean energy transition) is buying second hand electric vehicles in Japan and bringing them to Australia for resale. This caught the eye of Totally Renewable Phillip Island and we want to know what you think! The survey link is on our web page

totallyrenewablephillipisland.weebly.com

Energy stored in electric car batteries could power your home or stabilise the grid. That would have been good last blackout!

**Will an EV be your next car?**  
 Consider this: the Good Car Company (part of Energy Lab, Australia's largest clean tech start up - dedicated to the clean energy transition) is buying second hand electric vehicles in Japan and bringing them to Australia for resale. This caught the eye of Totally Renewable Phillip Island and we want to know what you think! The survey link is on our web page.

totallyrenewablephillipisland.weebly.com

**TRPI will be at the Newhaven Market this Saturday 2 1st Aug!**  
 Curious about electric cars? Come and have a look up close at one! We will be there to answer questions, & chat about new projects.  
 All donations at the gate of the market support Newhaven Primary. Please be generous!

Please fill out our survey is described as communities initiating, developing, owning, operating, implementing or benefiting from renewable & sustainable energy, link on website

totallyrenewablephillipisland.weebly.com

Have a coffee and a chat about what is going on here in Bass Coast!

**Sustainability FESTIVAL**

Coffee Chats With TRPI in  
**Coronet Bay**  
**Corinella**  
**Cowes**

**Phillip Island Community Energy Storage System! (PICCESS) Community engagement Pop Up Events**

TRPI, Energy Innovation Coop and Mondo are offering a range of sessions to introduce PICCESS, plus an on-line launch this Sunday 24th of October, as part of the 2021 Bass Coast Sustainability Festival. Go to [totallyrenewablephillipisland.weebly.com](http://totallyrenewablephillipisland.weebly.com) to find out more about this exciting project and what it can do to stabilise our electricity grid.

totallyrenewablephillipisland.weebly.com

Welcome Zoe!

Put power back into our community go to [www.surveymonkey.com/r/3WD55H2](http://www.surveymonkey.com/r/3WD55H2)

2 min Survey for San Remo + Phillip Island

Make Change Happen

Community owned renewable energy referred to in the survey is described as communities initiating, developing, owning, operating, implementing or benefiting from renewable & sustainable energy.

Examples of paid advertising put in the Phillip Island San Remo Advertiser. These were placed along side articles written on the same subject by our dynamic TRPI coordinator Zoe.

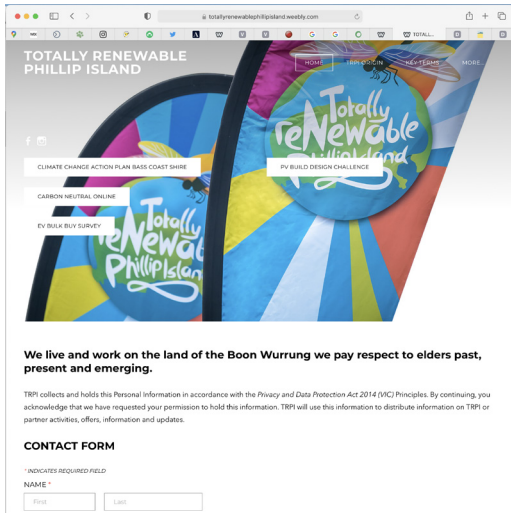
Bass Coast Post also ran an article written by Zoe that put over 100 views to our website. As both are on the internet it makes sense that the ability to quickly look up our web page was the driver of this.

This illustration approach is designed to catch the eye and cut through the anxiety many feel in relation to climate change preparation. It has become a core part of our communication strategy and distinctive within Bass Coast.

Messaging is a vital role for TRPI, leading by example and increasing the uptake of more sustainable practice within Bass Coast and surrounding shires.

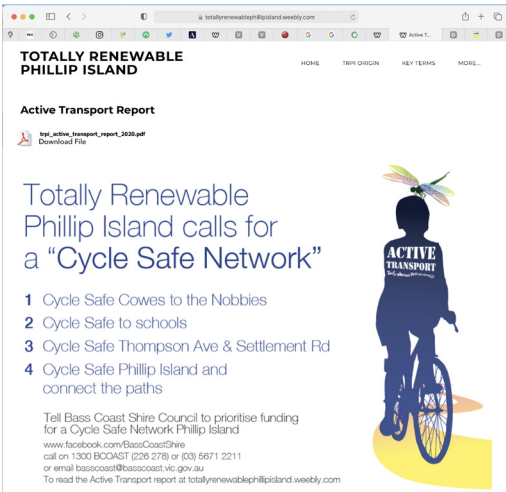
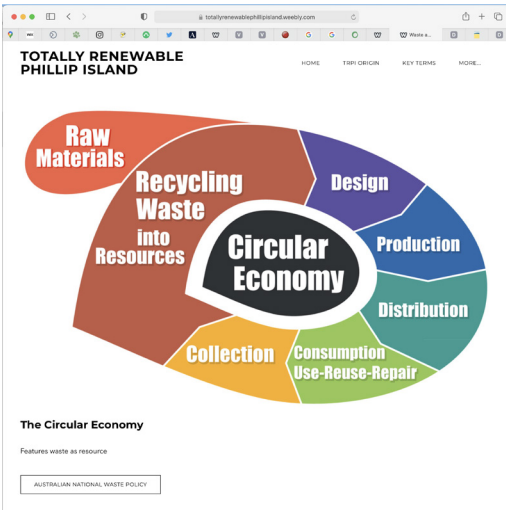
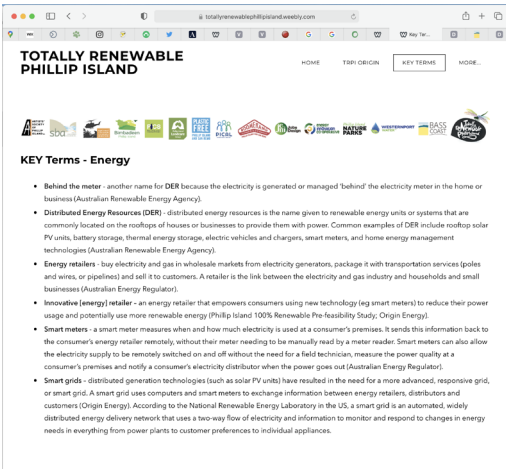
## Plans for the Future:

- Continue the messaging/marketing message via website, social media page and printed information to keep the community informed about Totally Renewable Phillip Island's work and successes with energy sustainability, encouraging people to look to sustainable solutions for their energy needs and consumer choices
- Continue to attend community events (When COVID safe)
- Have the TRPI Student Wind Design competition finalised and put in place for 2022 (Covid willing)
- Have Ian Southall onsite at Newhaven College, to inspire students to a pathway into a renewable tech career
- Sustainable Arts Show 2022 (this may be online due to COVID)
- Expand the education program to other schools on island and also toward Bass Valley Primary School to help propagate the renewable towns idea into the rest of Bass Coast Shire
- Continue to source educational forums live or online for the community to attend working towards 2030 zero emissions
- Continue to source educational forums online or live for the community to attend working towards 2030 zero emissions
- Increase social media and website traffic by including troubleshooting for people moving towards renewable and a real time dashboard of renewable energy generation on the on the website and in a prominent community location
- Develop and implement strategies for businesses to see TRPI as an independent, relevant and reliable source of information.



TRPI Website  
page screen grabs

Go to [www.totallyrenewablephilipisland.weebly.com](http://www.totallyrenewablephilipisland.weebly.com) to interact with our web page. In the meantime here are screen grabs of the different pages available to the public. We have had interactions from people all over the globe, the internet is a vital, affordable tool in our messaging toolbox.

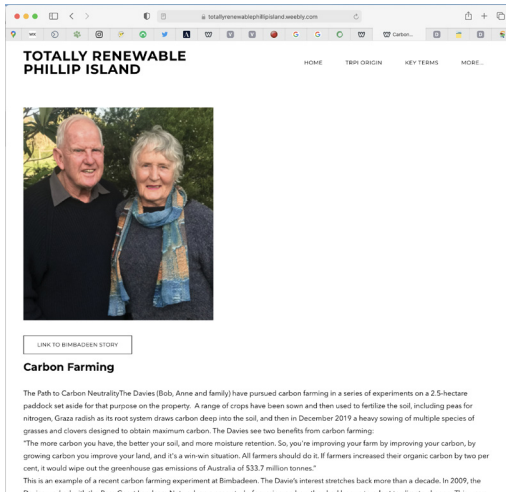


Recommendation  
Currently there are reserves and trails for recreation. A Cycle Safe Strategy for Phillip Island



In a nutshell, the motivation behind the Wind Power Challenge competition is to inspire the students to pursue renewable education pathways. We hope that the competition will educate them on what is currently being done in this field, eg. the possibilities of power generation via vibration and turbine.

We are offering two main prizes, one for the most wattage generated and the other for the most creative/artistic/cultural wattage generating entry. Combining the power of the arts to lift the heart and engage the spirit with the practical engineering side of power generation. Power generation does not need to solely focus on industrial solutions, for while we need to be able to turn on the lights, we also need to lift the spirit. (More information will be released in first term of the 2022 school year)

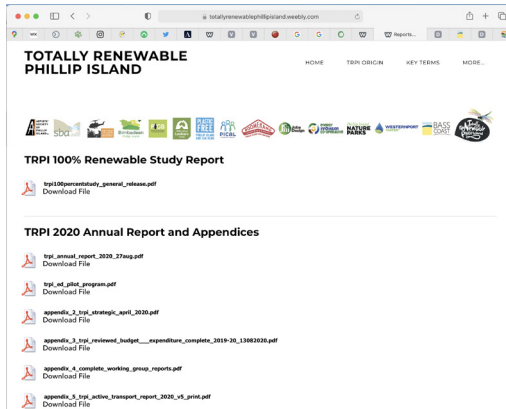


The Path to Carbon Neutrality The Davies (Bob, Anne and family) have pursued carbon farming in a series of experiments on a 2.5-hectare paddock set aside for that purpose on the property. A range of crops have been sown and then used to fertilize the soil, including peas for nitrogen, Grass radish as its root system draws carbon deep into the soil, and then in December 2019 a heavy sowing of multiple species of grasses and clovers designed to obtain maximum carbon. The Davies see two benefits from carbon farming:

"The more carbon you have, the better your soil, and more moisture retention. So, you're improving your farm by improving your carbon, by growing carbon you improve your land, and it's a win-win situation. All farmers should do it. If farmers increased their organic carbon by two per cent, it would wipe out the greenhouse gas emissions of Australia of 533.7 million tonnes."

This is an example of a recent carbon farming experiment at Bimbadeen. The Davies's interest stretches back more than a decade. In 2009, the Davies worked with the Bass Coast Landcare Network on a case study, focusing on how they had begun to adapt to climate change. This was a part of the broader regional **Agricultural Greenhouse Emissions project**, Bass Coast Landcare Network worked with Bob and Anne to identify their 'areas of concern' and develop specific actions for the enterprise.

The following table summarises the areas of concern identified in that case study, and the actions taken: this process is a forerunner of the climate adaptation plan of the Growing Southern Gippsland project. The project also provided Bob and Anne with the knowledge and confidence to focus on their carbon neutral and soil carbon sequestration journey.



14 TRPI Principles

1. We are committed to a vision of a sustainable future for Phillip Island.
2. We are committed to the highest standards of environmental and social performance.
3. We are committed to the highest standards of environmental and social performance.
4. We are committed to the highest standards of environmental and social performance.
5. We are committed to the highest standards of environmental and social performance.
6. We are committed to the highest standards of environmental and social performance.
7. We are committed to the highest standards of environmental and social performance.
8. We are committed to the highest standards of environmental and social performance.
9. We are committed to the highest standards of environmental and social performance.
10. We are committed to the highest standards of environmental and social performance.
11. We are committed to the highest standards of environmental and social performance.
12. We are committed to the highest standards of environmental and social performance.
13. We are committed to the highest standards of environmental and social performance.
14. We are committed to the highest standards of environmental and social performance.

TRPI Framework

TRPI Charter



## Clean Transport Group

### The purpose of the Clean Transport Working Group is to:

- ▶ Educate the community on alternative forms of transport
- ▶ Support increased opportunities for active transport on Phillip Island

### Examples of 2020-21 actions:

- ▶ Attended 4 community events showcasing Electric Vehicles, both cars & Electric Motorbikes
- ▶ Participated in Infrastructure Victoria's Advisory Committee which addressed the question: 'What incentives does the Victorian Government need to put in place to increase the uptake of Electric Vehicles'? This was a series of directed learning & workshops over a 3 month period. It was informative and an opportunity to give feedback from a regional perspective
- ▶ Participated in the review of Speed Limits on Phillip Island, initiated by Cr Rooks and the Community Reference Group for Phillip Island Integrated Transport Strategy (Community Vision for Transport). Input supported the need for safe crossing points for cyclists, improved maintenance of existing on-road cycling lanes, reduced speed limit for a number of roads with high pedestrian and cycling use
- ▶ Supported Bass Coast Shire Council's progress on active transport policy and infrastructure for Electric Vehicle charging data from across shire. New signs are now in the Transit Centre to promote Electric Vehicles. Chargers are potential users of community battery power – cars charged by renewable energy
- ▶ Provided information to the public about EV Electric Vehicles at as many community events as possible. COVID restraints have prevented attendance at the Waterline communities

- ▶ Continue to monitor the progress of the Cycling Strategy for Phillip Island currently being developed by Bass Coast Shire Council. The Draft Plan is expected to be available for community feedback by the end of 2021
- ▶ Responded to enquiries about the impact of Totally Renewable Phillip Island's Active Transport Review with other groups in Bass Coast and neighbouring shires to gain greater priority for funding to enable safer cycling
- ▶ Engaged with 12 other community groups as part of the review of speed limits on Phillip Island
- ▶ Responded to enquiries on Totally Renewable Phillip Island's website about clean transport issues
- ▶ Facilitated a community member to present a proposal to Totally Renewable Phillip Island to hold an Electric Motorbike event on Phillip Island (when COVID safe). Totally Renewable Phillip Island strongly supported the proposal to showcase another clean transport option for commuter & recreational use
- ▶ Work towards Safer cycling on Phillip Island and across Bass Coast Shire Council with a network of shared paths and on-road cycle lanes. This will facilitate new business opportunities for accommodation and support services for cyclists and walkers
- ▶ Increased Electric Vehicle charging infrastructure across Bass Coast including Ultrafast charging at Cowes Transit Centre. Covered public carpark areas with solar panels/ batteries to provide renewable energy for all charging facilities
- ▶ Demand Responsive Transport using small electric commuter vehicles, to provide Public Transport powered by renewable energy around the Island
- ▶ Continue to support an Electric Motorbike event on Phillip Island and look for other opportunities to showcase Electric Vehicles, such as Totally Renewable Phillip Island Open Day and Bass Coast Landcare Network's Sustainability Festival

### Plans for the Future:

- ▶ Explore a Community Bulk-Buy of second-hand Electric Vehicles imported from Japan for Bass Coast & South Gippsland Shires
- ▶ Conduct an Electric Vehicle activity at the Sustainability Festival
- ▶ Work with Bass Coast Shire Council to reduce transport related emissions by encouraging active transport for all abilities walking and cycle paths through community consultation
- ▶ Join the Community Reference group for Phillip Island Integrated Transport Strategy (Community Vision for Transport) to represent Totally Renewable Phillip Island's priorities for clean transport
- ▶ Continue to report to the community and bicycle & walker groups on the progress of new shared pathways. Participate in all community engagement opportunities. Maintain pressure on funding bodies for an increased network of pathways for cyclists & walkers for commuting and recreation across Bass Coast Shire
- ▶ Investigate the possibility of an electric vehicle trial so ordinary people can try out electric vehicles. Hepburn Shire trialled a similar program with great success. Details such as legalities, insurance, charges, eligibility (licence) will be obtained from Hepburn Shire with a view to approaching Bass Coast Shire Council: "to purchase an electric vehicle and a couple of E Bikes and make them available for hire by local people"
- ▶ Need to expand group membership. If you are interested in joining this progressive group, contact the Totally Renewable Phillip Island Coordinator through our web page contact portal.

# Appendices referred to and separate from this document

## Appendix 1 Financial Report

